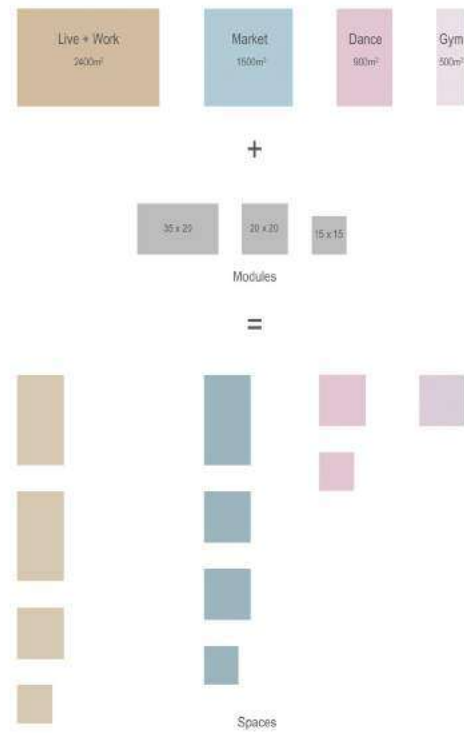
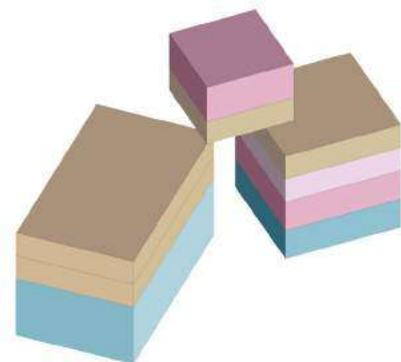


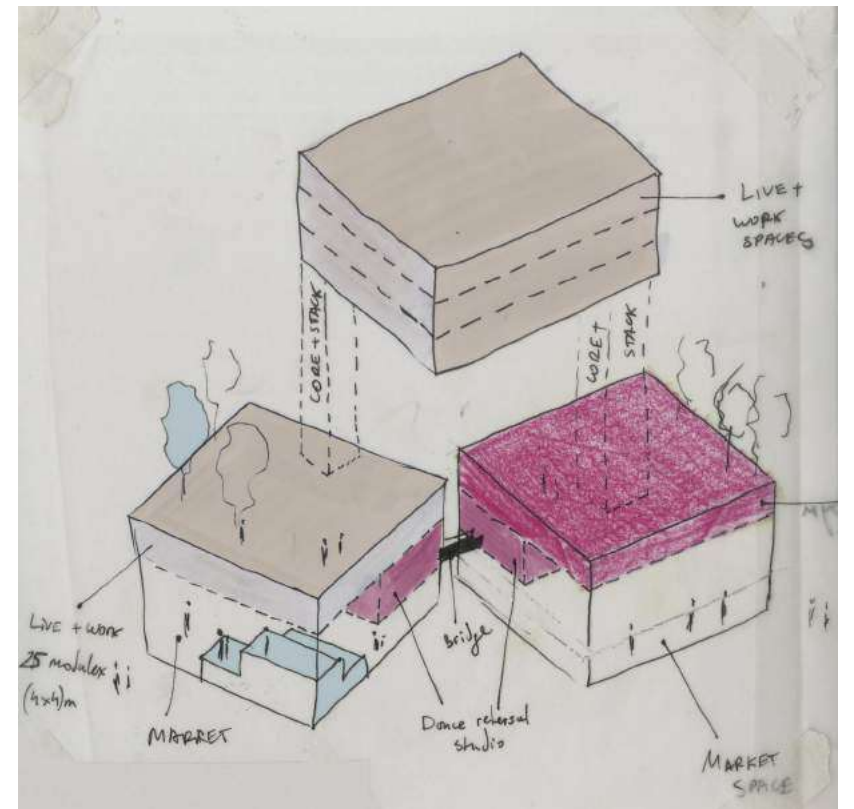
URBAN



Sectional composition

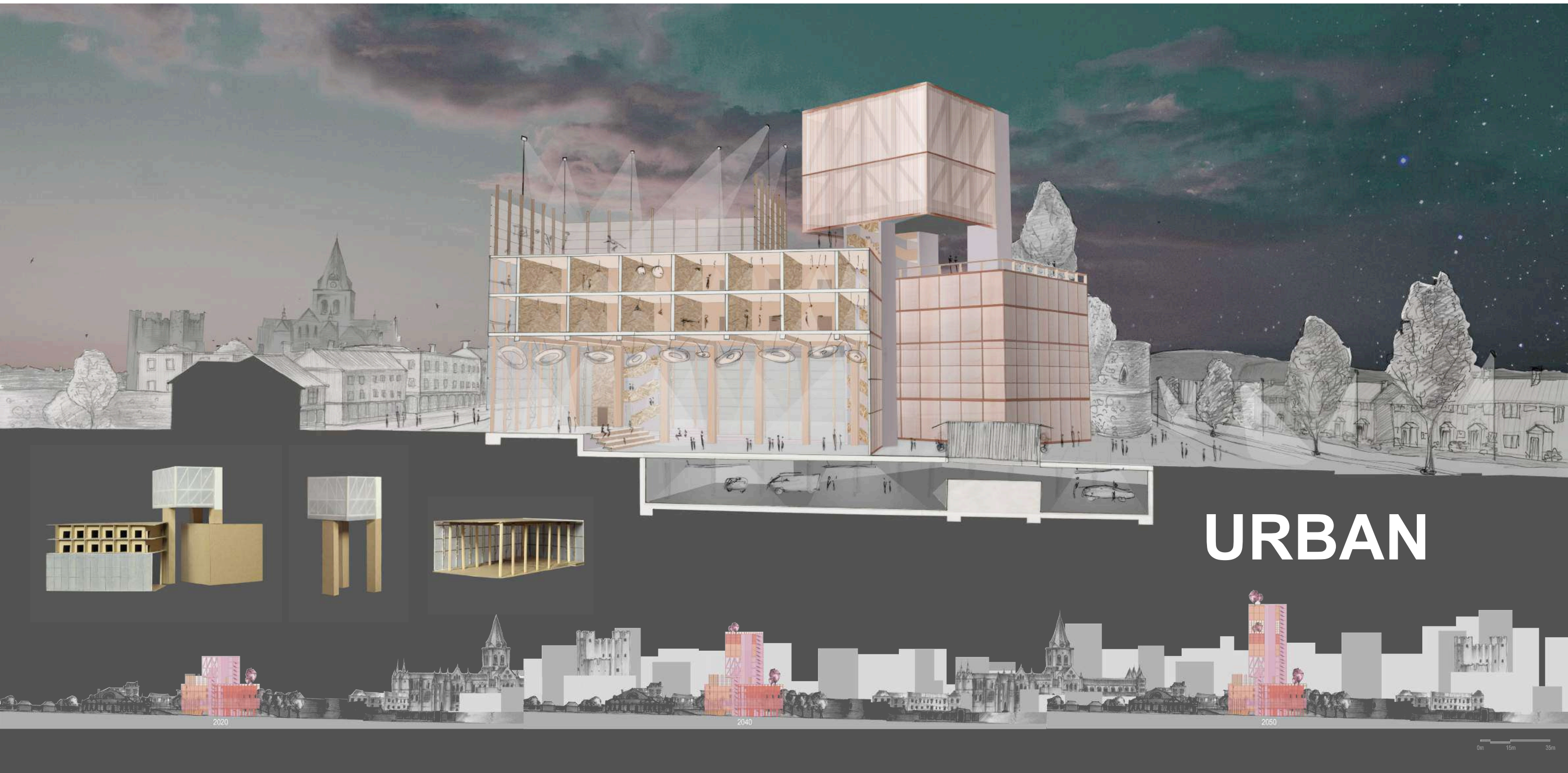


Rochester



Concept





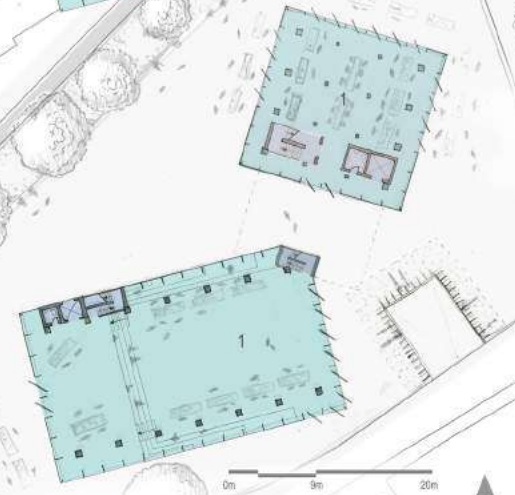
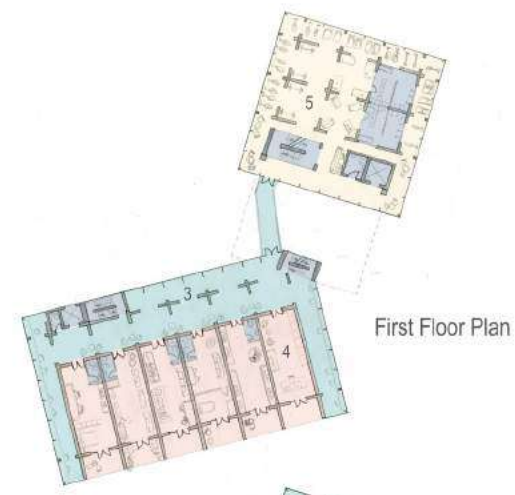
URBAN

2020

2040

2060

0m 15m 35m



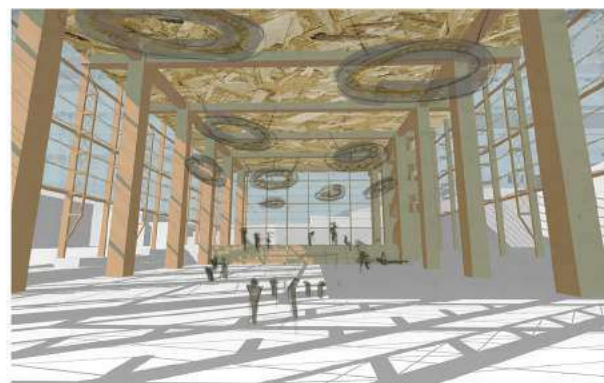
1. Public multi-use space
2. Rehearsal studio
3. Social Live+Work area
4. Private Live+Work unit
5. Gym
- Key
- Services
 - Public spaces
 - Dance
 - Private spaces
 - Gym



Section B-B



Rehearsal studio A



Multi purpose space



Public Live+Work space



Public Live+Work space



Auditorium
Orthographics



Night Club elevation



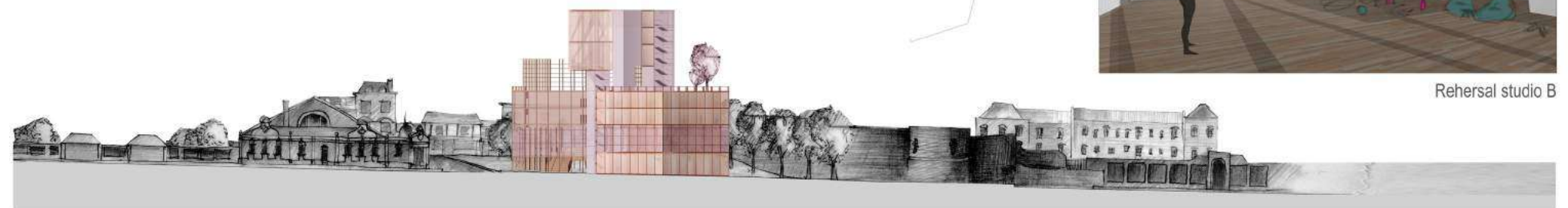
Multi Use Games Area



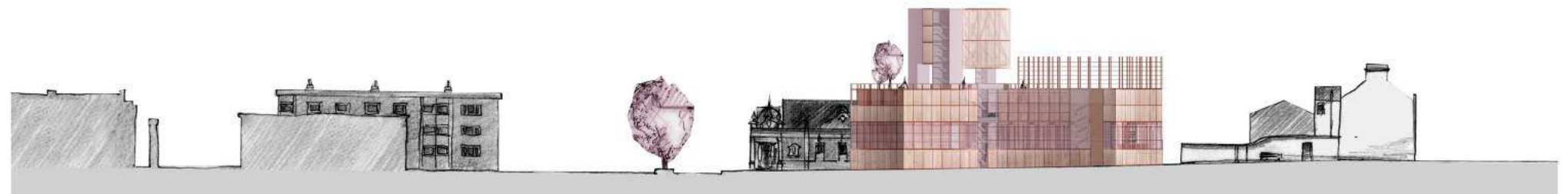
High Street elevation



Rehearsal studio B

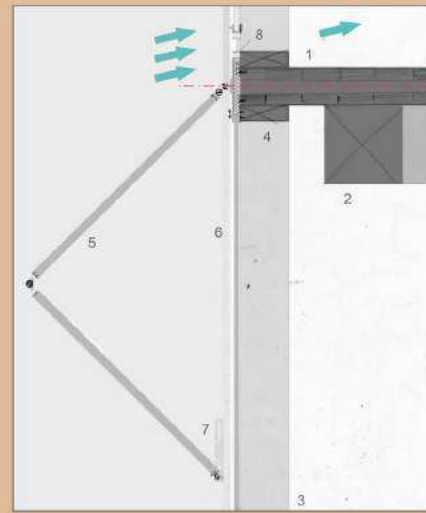


Blue Boar elevation



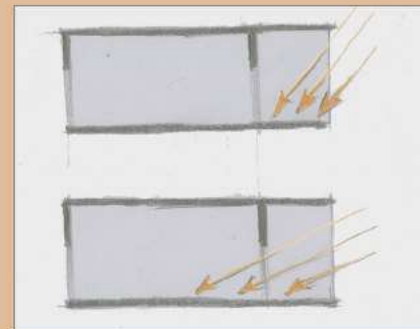
City Wall elevation

Orthographics

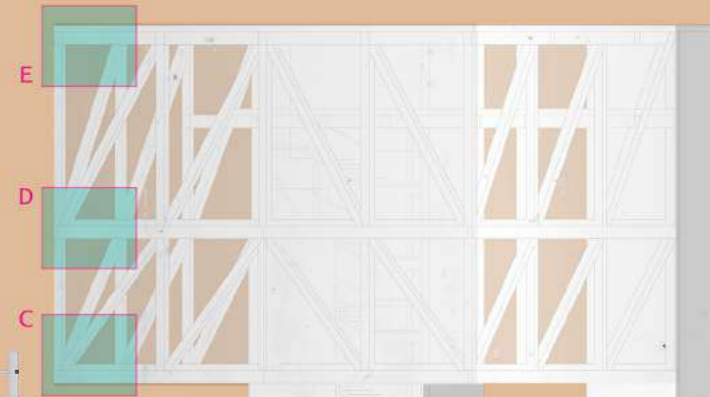


- Detail A
1. Timber truss mullion
 2. Transom
 3. Glass louvres and damper
 4. CLT floor slab

- Detail B
1. CLT floor slab
 2. Cantilever beam
 3. Timber mullion
 4. Transom
 5. Foldable timber solar shade
 6. Stainless steel guide rail
 7. Roller
 8. Glass louvres and damper



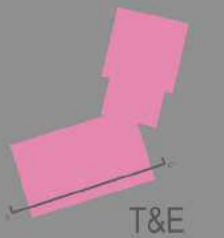
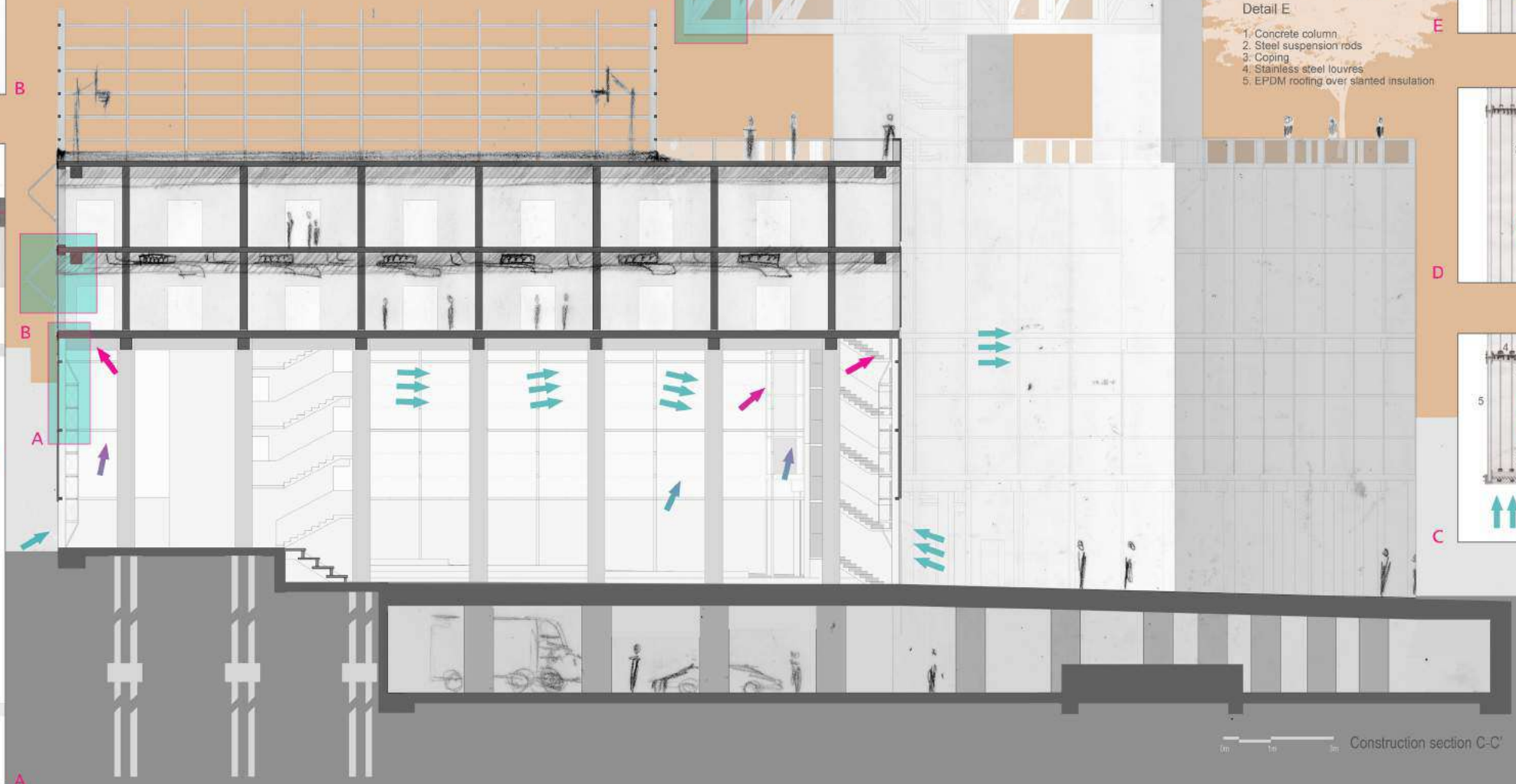
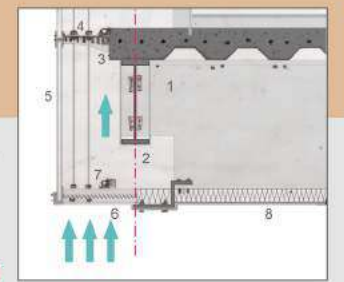
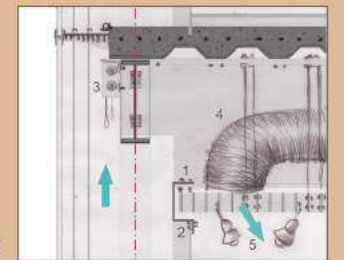
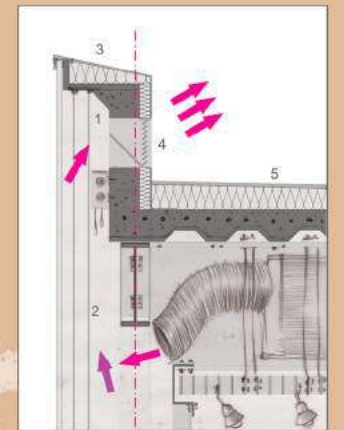
Balconies solar strategy

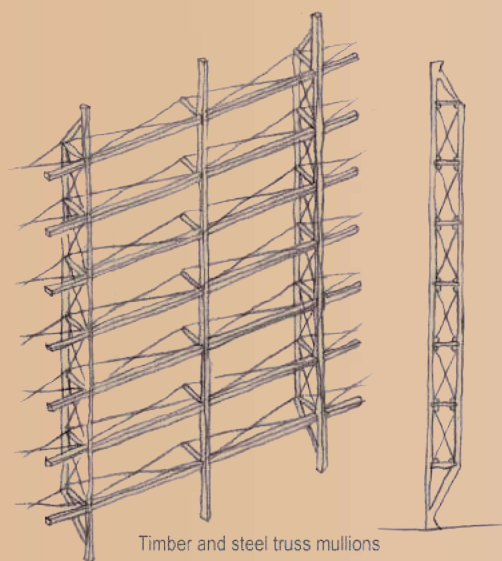


- Detail C
1. Primary steel element
 2. Secondary steel element
 3. Composite concrete slab
 4. Suspended catwalk
 5. Profile glass panels
 6. Stainless steel louvres
 7. Light fitting
 8. Copper cladding over insulation

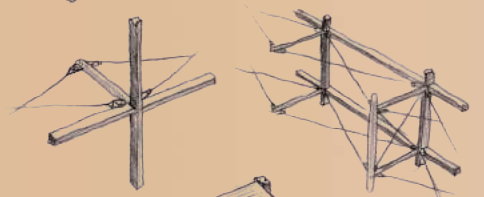
- Detail D
1. Stainless steel S-section bracket
 2. Suspended glass plank
 3. Set of blinds
 4. Air handling unit
 5. Light fittings

- Detail E
1. Concrete column
 2. Steel suspension rods
 3. Coping
 4. Stainless steel louvres
 5. EPDM roofing over slatted insulation

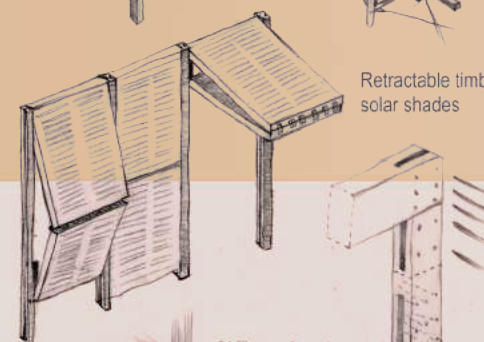




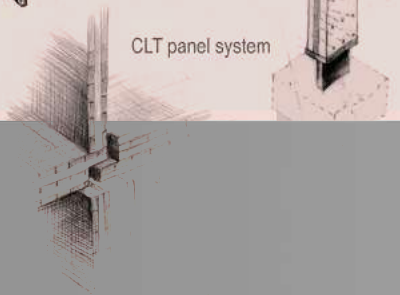
Timber and steel truss mullions



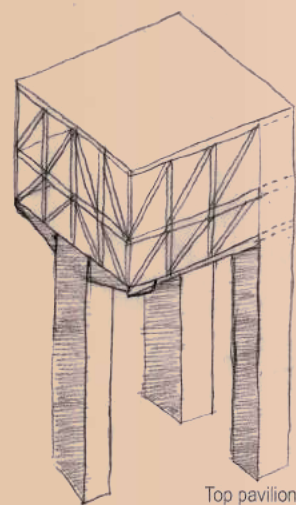
Retractable timber solar shades



CLT panel system



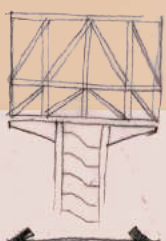
Glulam column beam joint



Top pavilion



TRUSS WORKING THIS WAY



CANTILEVER WORKING BOTH WAYS FROM CENTRAL SUPPORT

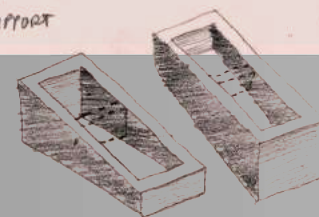
PROBLEM OF SYMMETRY



"WINGS"



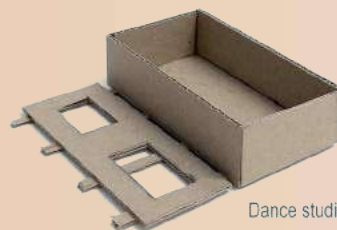
SOLUTION TO "FLAG" PROBLEM



Reinforced concrete arms



Dance studio



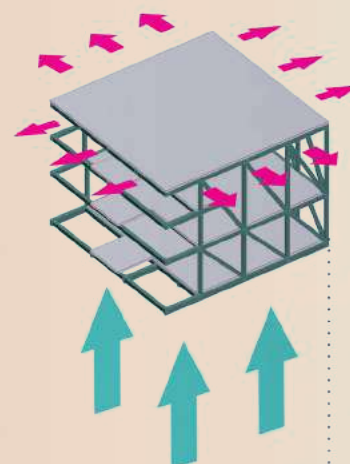
Dance studio

Strategy B

Fresh air goes into the public spaces via ducts between the strips of fenestration. Then in is pushed into the unit through grills with the help of low power turbines. The hot air exits the spaces through the open balconies/grills.

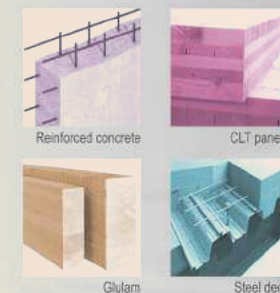
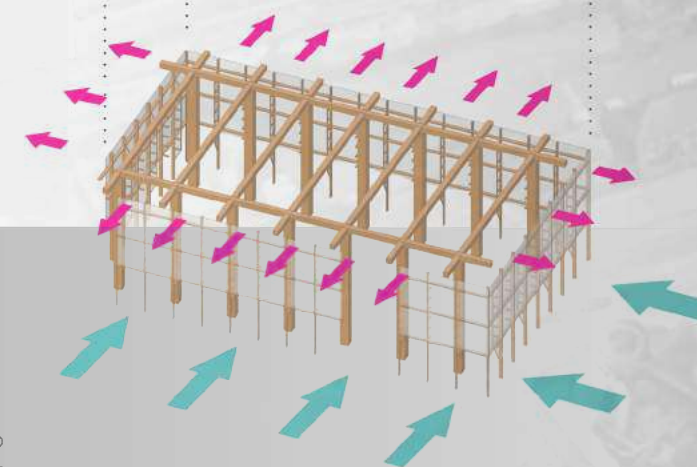
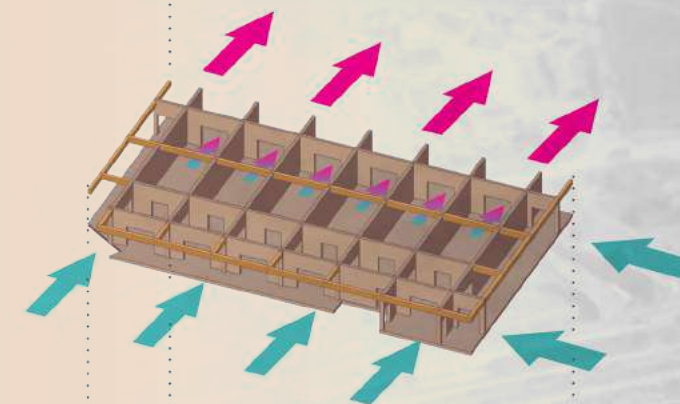
Strategy C

In the summer months the space will be completely open on the ground floor, which would result in very effective cross ventilation. In the winter months, when closed, the hot air will be let out at the top of the space via louvres on the windows, controlled by dampers.



Strategy A

Fresh air is pumped in the building through the ducts on the bottom of the façade. The air then travels to the top where it is extracted out. On each floor there are ducts that extract fresh air through the façade and take it to an air handling unit, after which it is dispensed into the spaces.



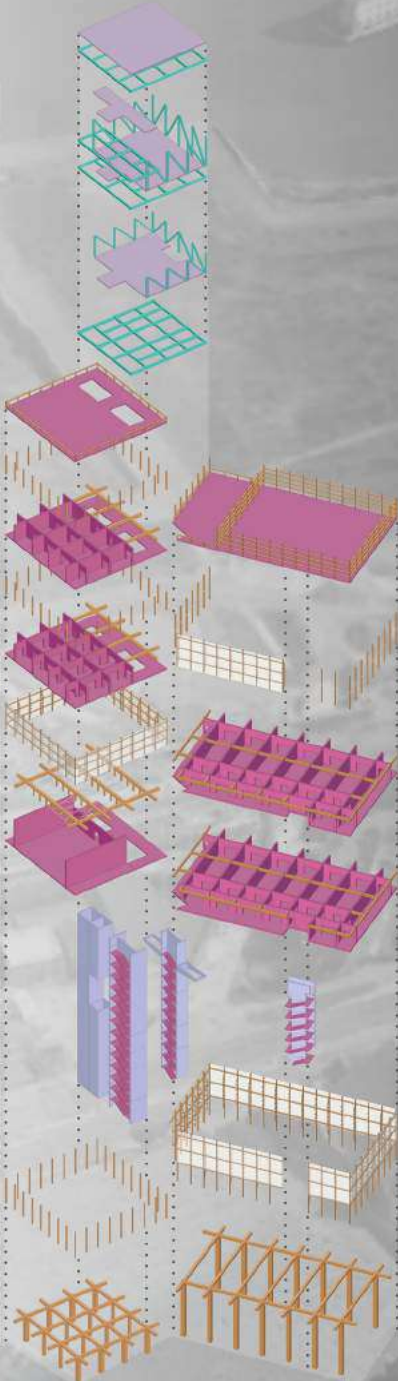
Reinforced concrete

CLT panels

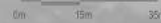
Glulam

Steel deck

Exploded ventilation iso

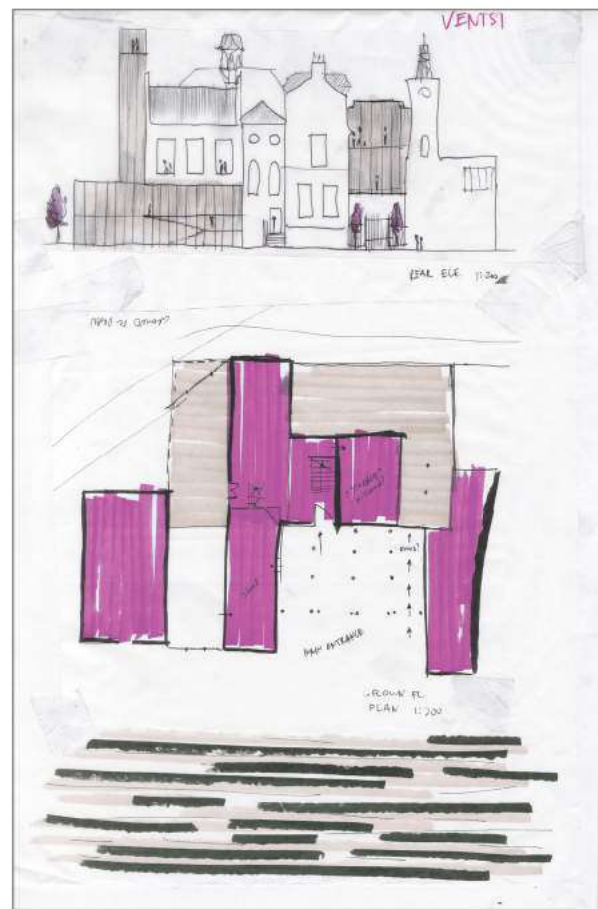


Exploded construction iso

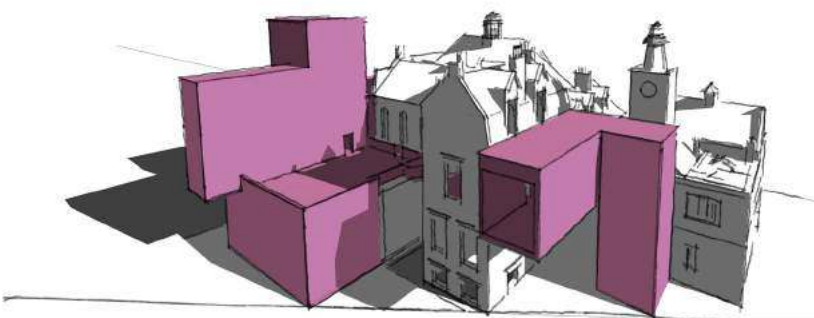
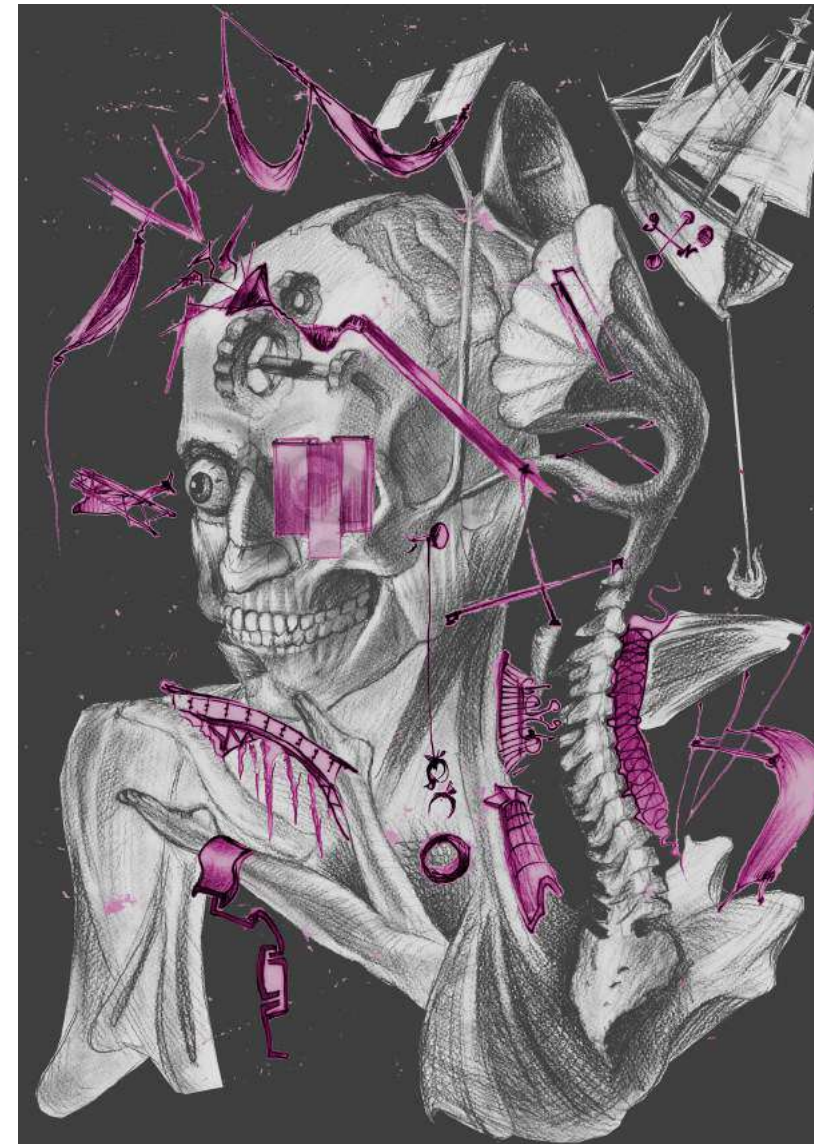




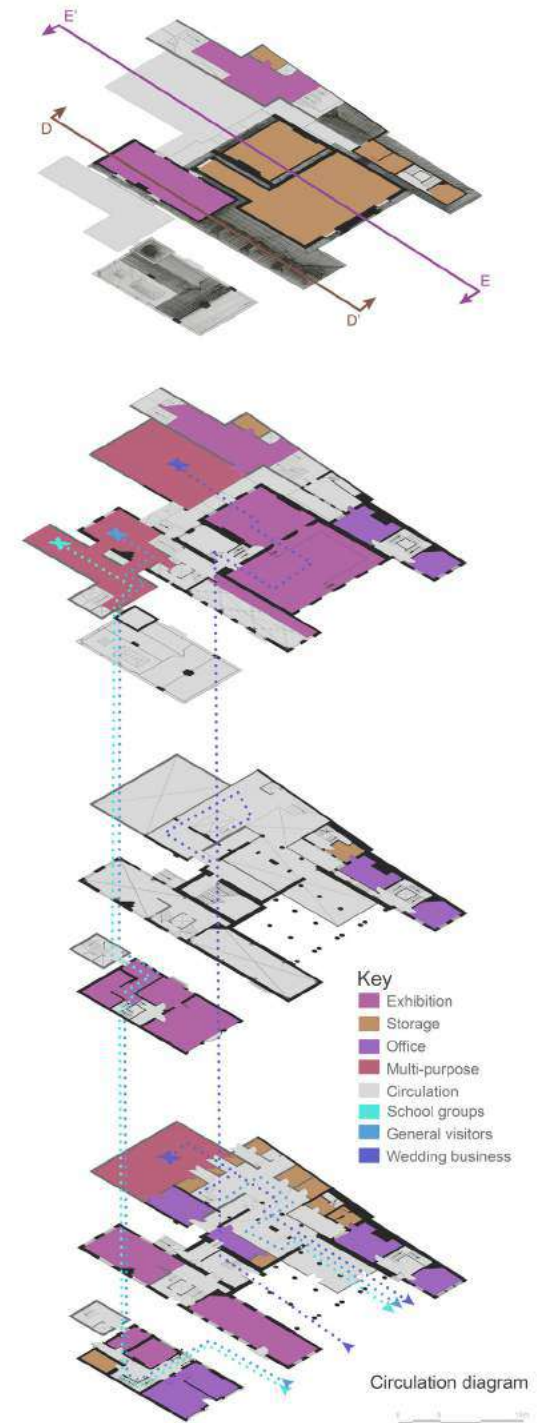
Rochester

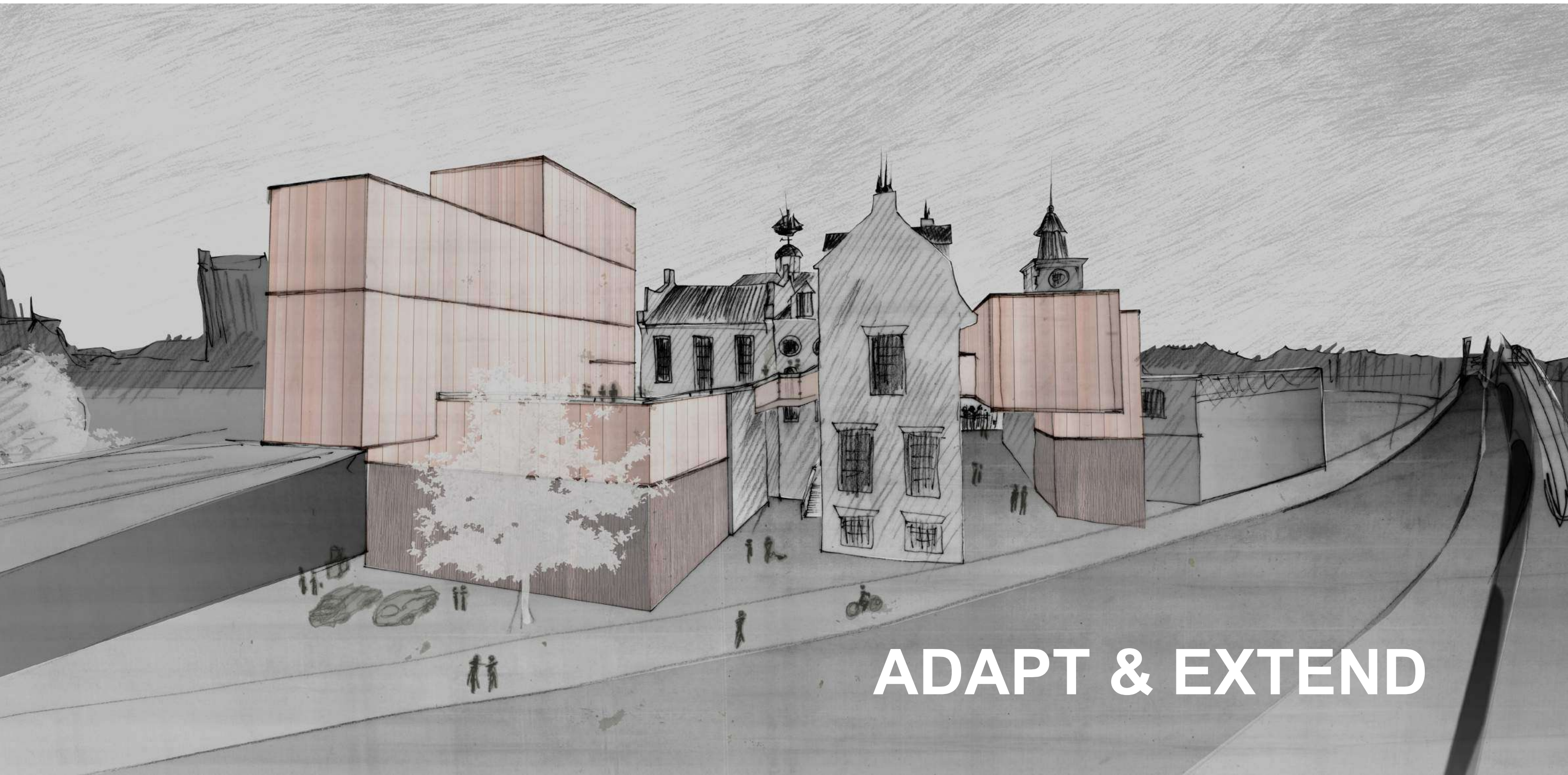


Charette work

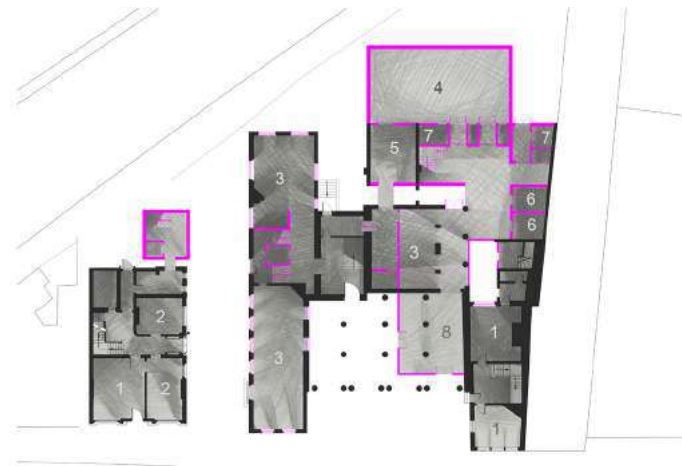


Concept

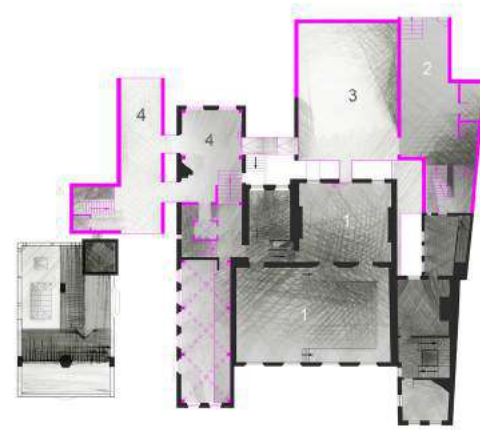




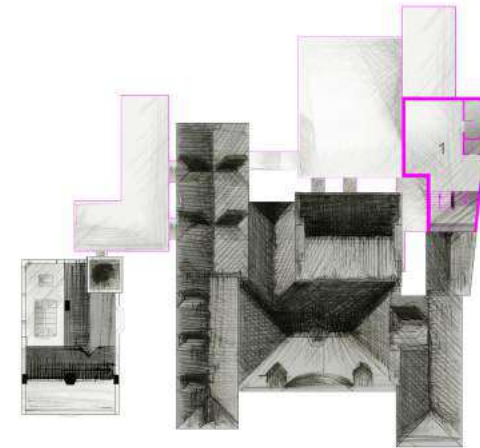
ADAPT & EXTEND



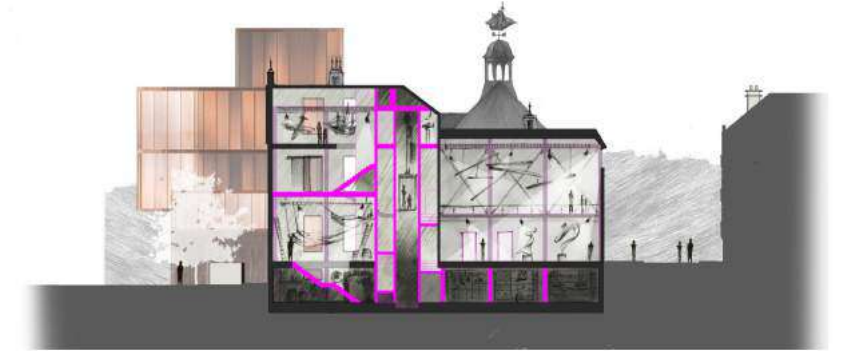
Ground floor plan



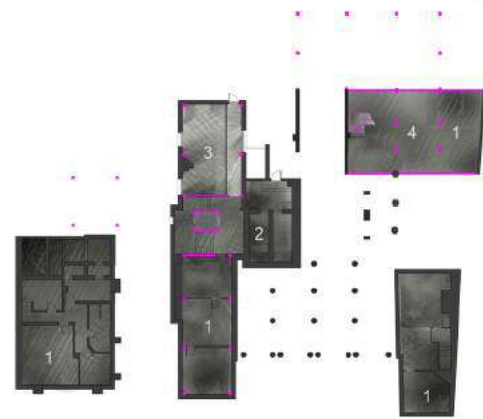
First floor plan



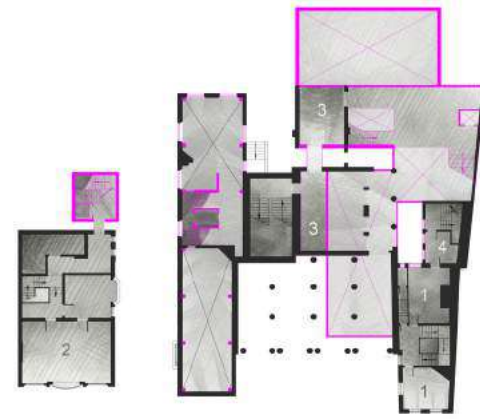
Roof plan



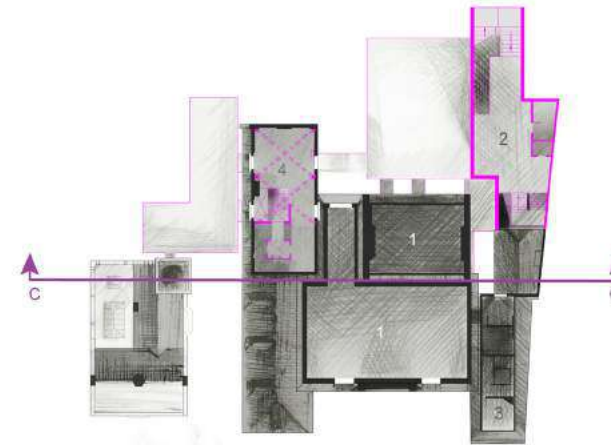
Section A-A'



Basement plan



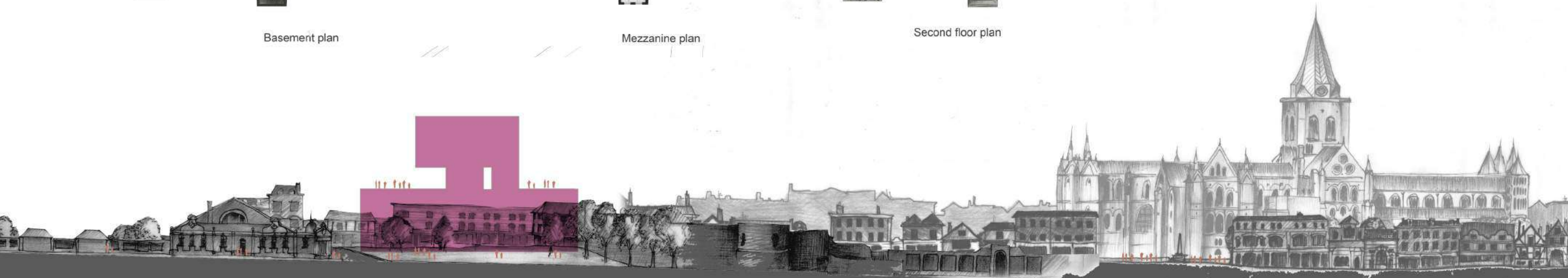
Mezzanine plan

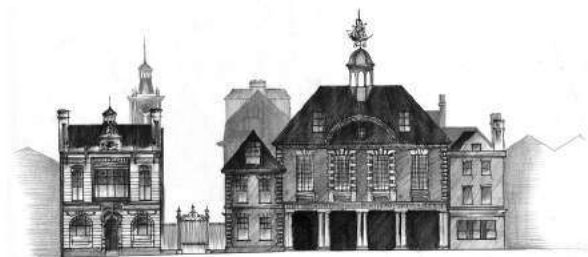


Second floor plan

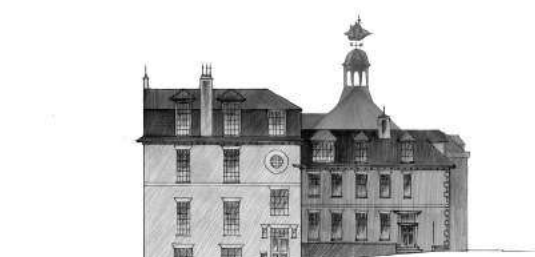


Section B-B'

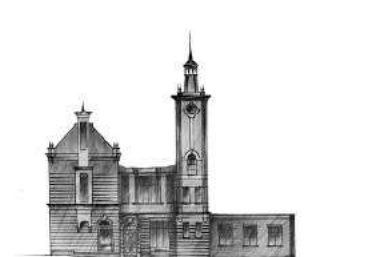




Existing South West Elevation



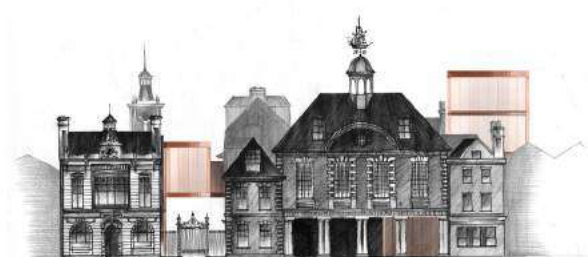
Existing Bull Lane Elevation



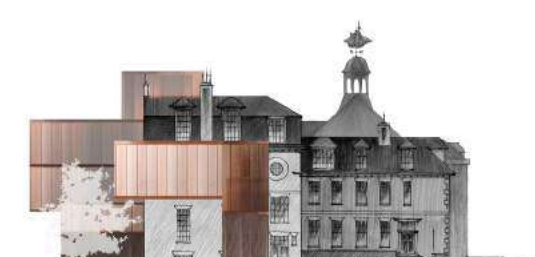
Existing Bull Lane Elevation



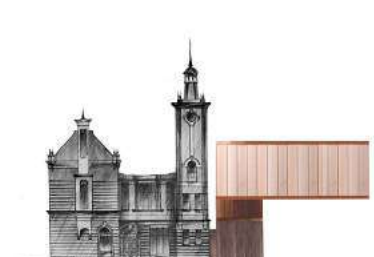
Existing North East Elevation



Proposal South West Elevation



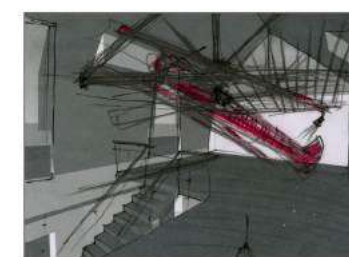
Proposal Bull Lane Elevation



Proposal Bull Lane Elevation



Proposal North East Elevation



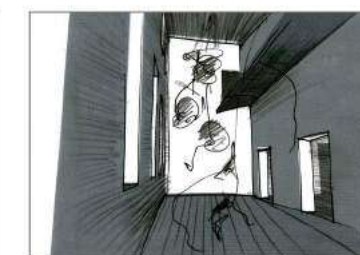
Maritime exhibition



Bull Lane



Temporary show



Temporary show



Outdoor terrace



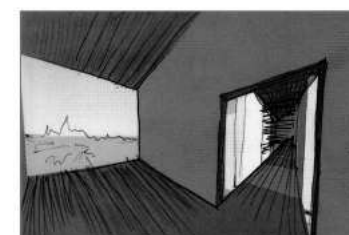
Wedding route



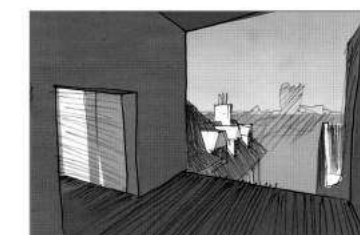
Bull Lane evolution



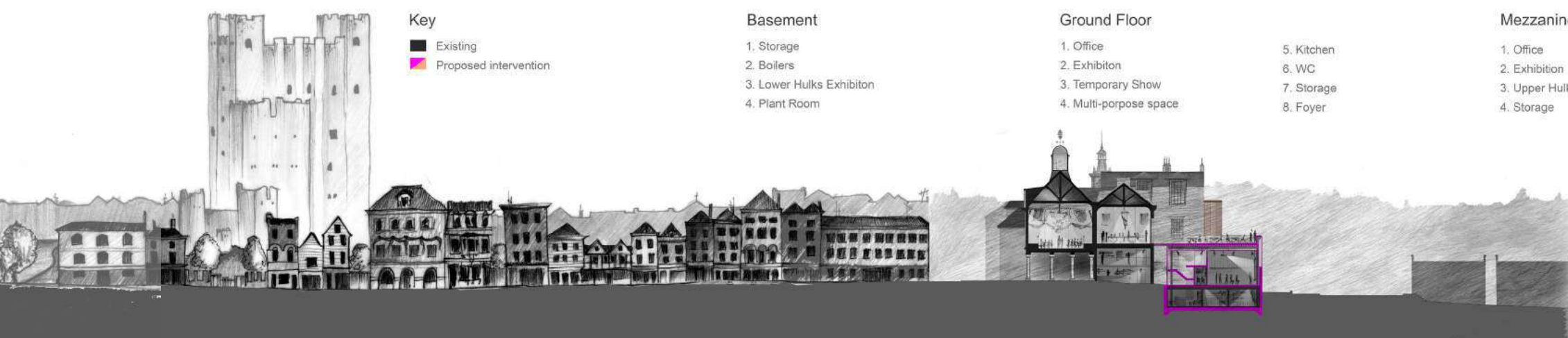
Bull Lane evolution



Internal axes



Framed view of Rochester



ABSTRACT

The journey of writing this text began when I was in a foreign country; I met a foreigner, who had visited Bulgaria and showed me what impressed him the most. It was something I had never seen before. The monument of Buzludzha was, as commonly said in Bulgarian, a modern palace in the middle of nowhere. Its function was to represent the power of the Communist Party, the construction of a decade, a site truly planned to last. Its life, however, did not even reach manhood as it was desolated only ten years after it opened its doors in 1981.

For a while I was frustrated for being unfamiliar with one of the greatest architectural achievements realised in my own country, despite considering myself an ambitious aspiring architect. When my emotions settled down, room for curiosity opened up. Why did I not know about Buzludzha? Why did I know so little about this political episode of the development of my country? Trying to find out more about the monument, I hit many dead ends.



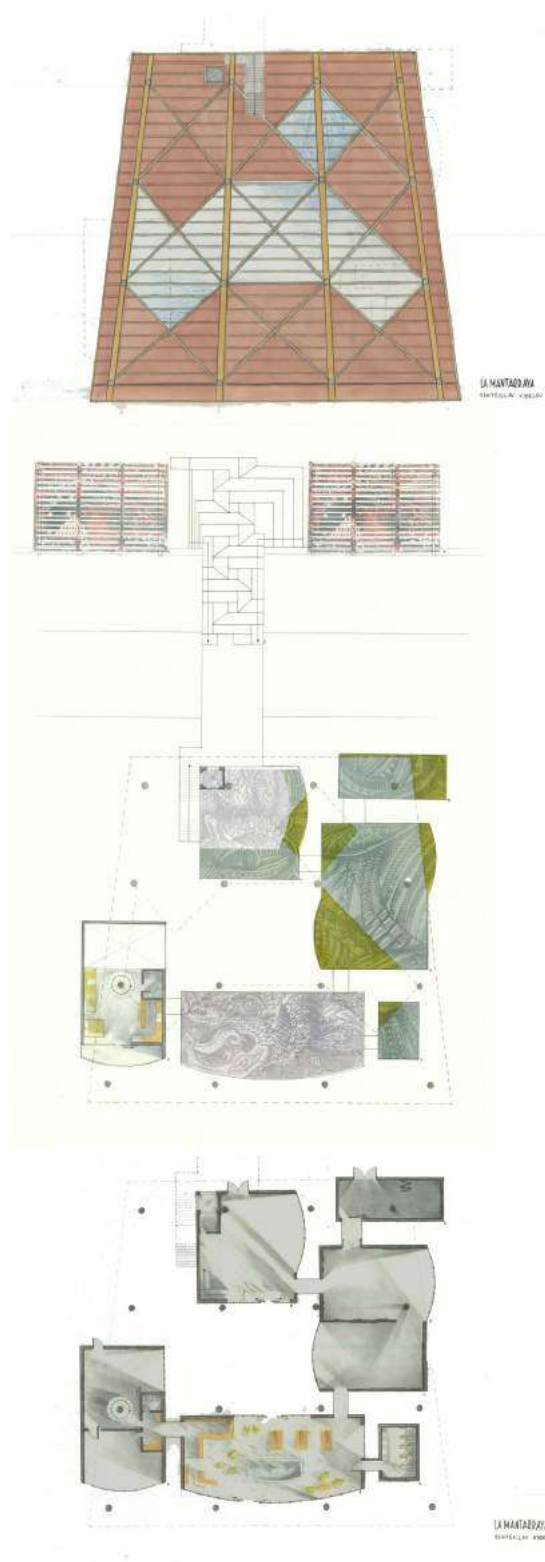


Most of the documents on this piece of architecture were destroyed, which made it even more exciting for me. At a certain point I managed to find the phone number of the architect, the 92-year-old at the time, Georgi Stoilov. The phone call I had with him inspired me further and set me on the path to revealing interesting facts about this structure.

Buzludzha is a symbol of power, anger, shame, neglect, but also grace, emotion, and sublimity. It is provocative because it represented an ideology controversial to that of modern Bulgaria. Different generations look at Communism differently – some were born and spent most of their lives in its heyday, some experienced the drastic shift to Democracy, and the youngest, born after it, know little to nothing about it.

The following text presents a mix of theories, observations, facts, interpretations, speculations, illustrations and conclusions on the political and social aspects throughout the whole existence of the monument. Since I am an aspiring architect, not a writer or a philosopher, I have allowed myself to be messy and emotional at points. The text is ordered to be perceived rather as an experience, and perhaps would be easier perceived by architects and artists.

STAGE 1 & STAGE 2

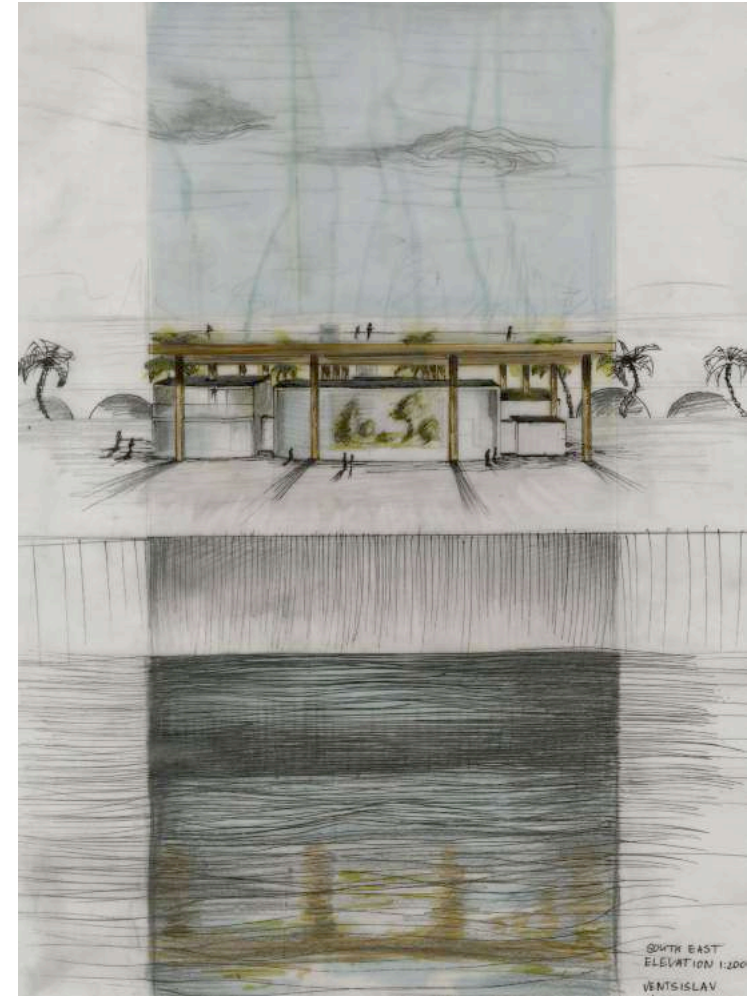
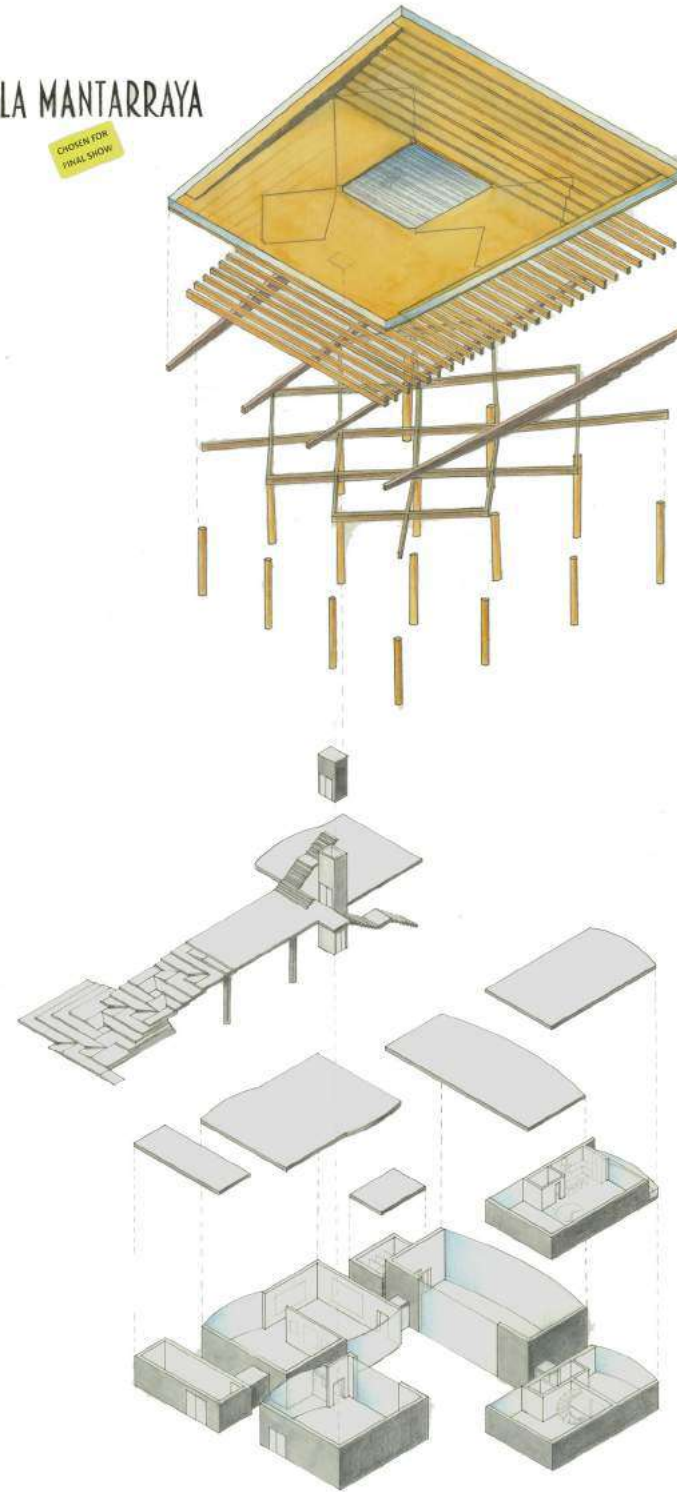


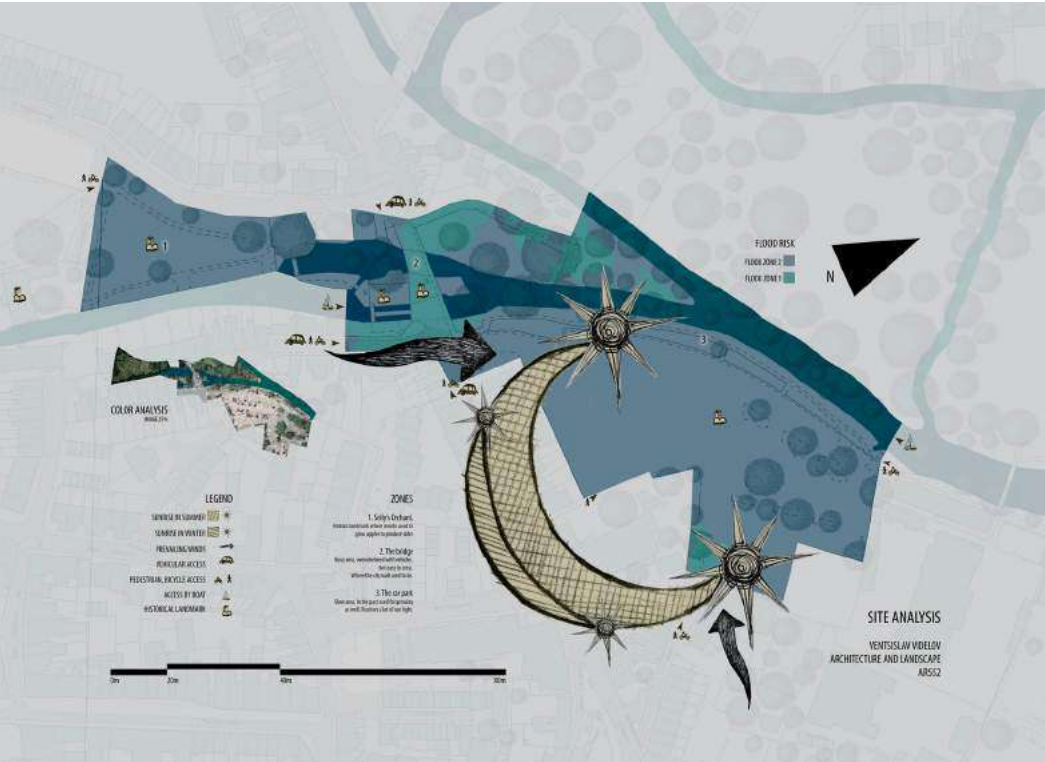
Barcelona Art Gallery



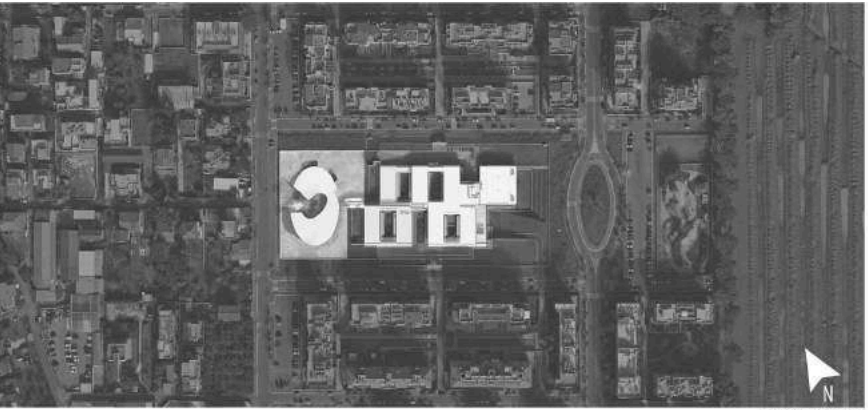
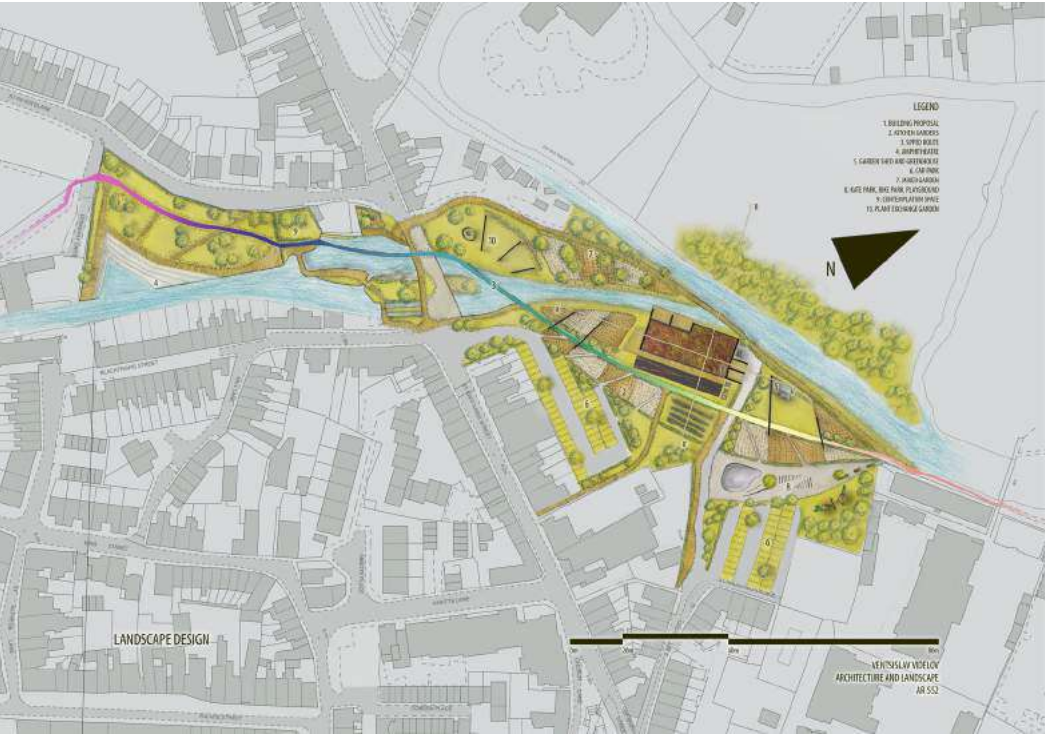
LA MANTARRAYA

CHOSEN FOR
PRIMA SHOW

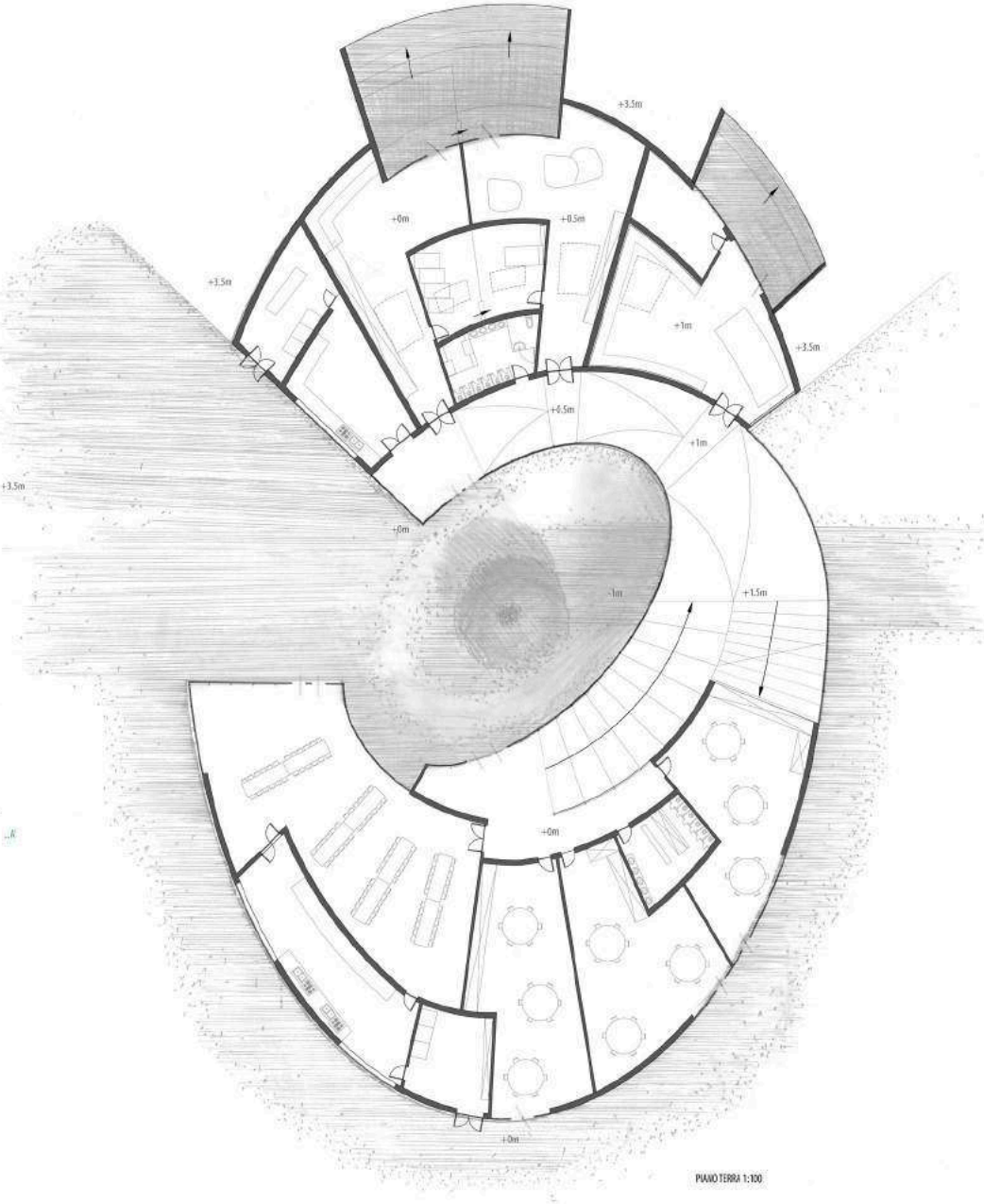
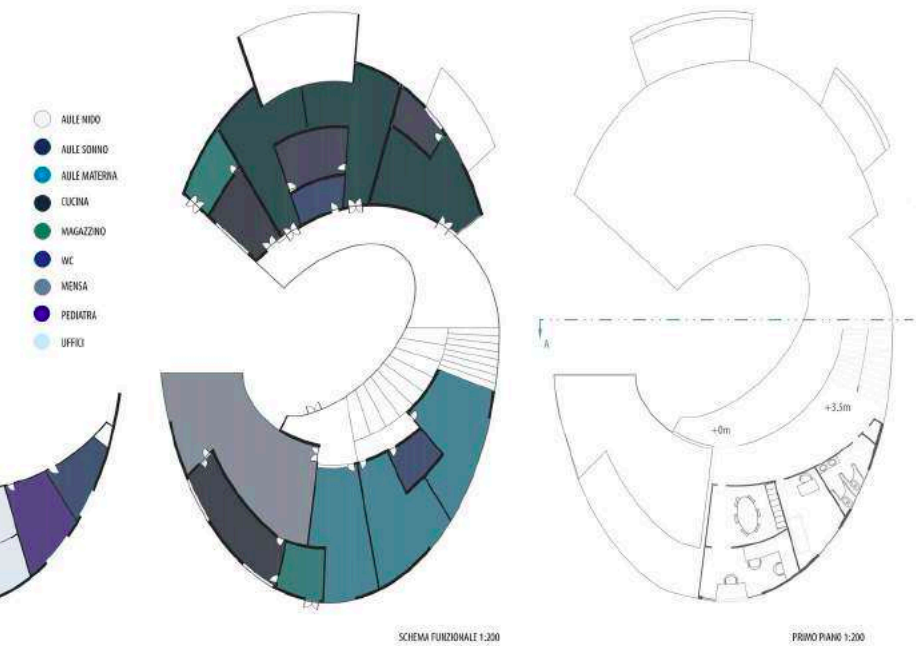


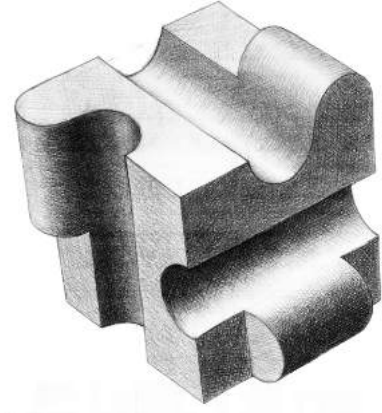
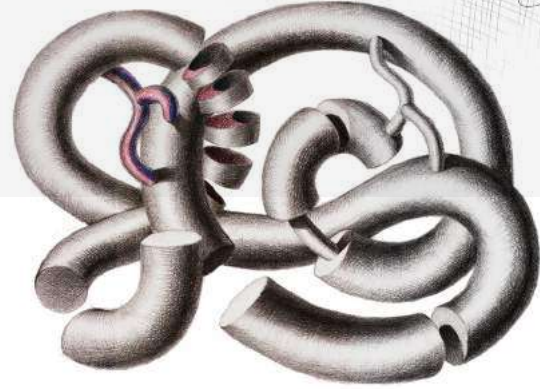
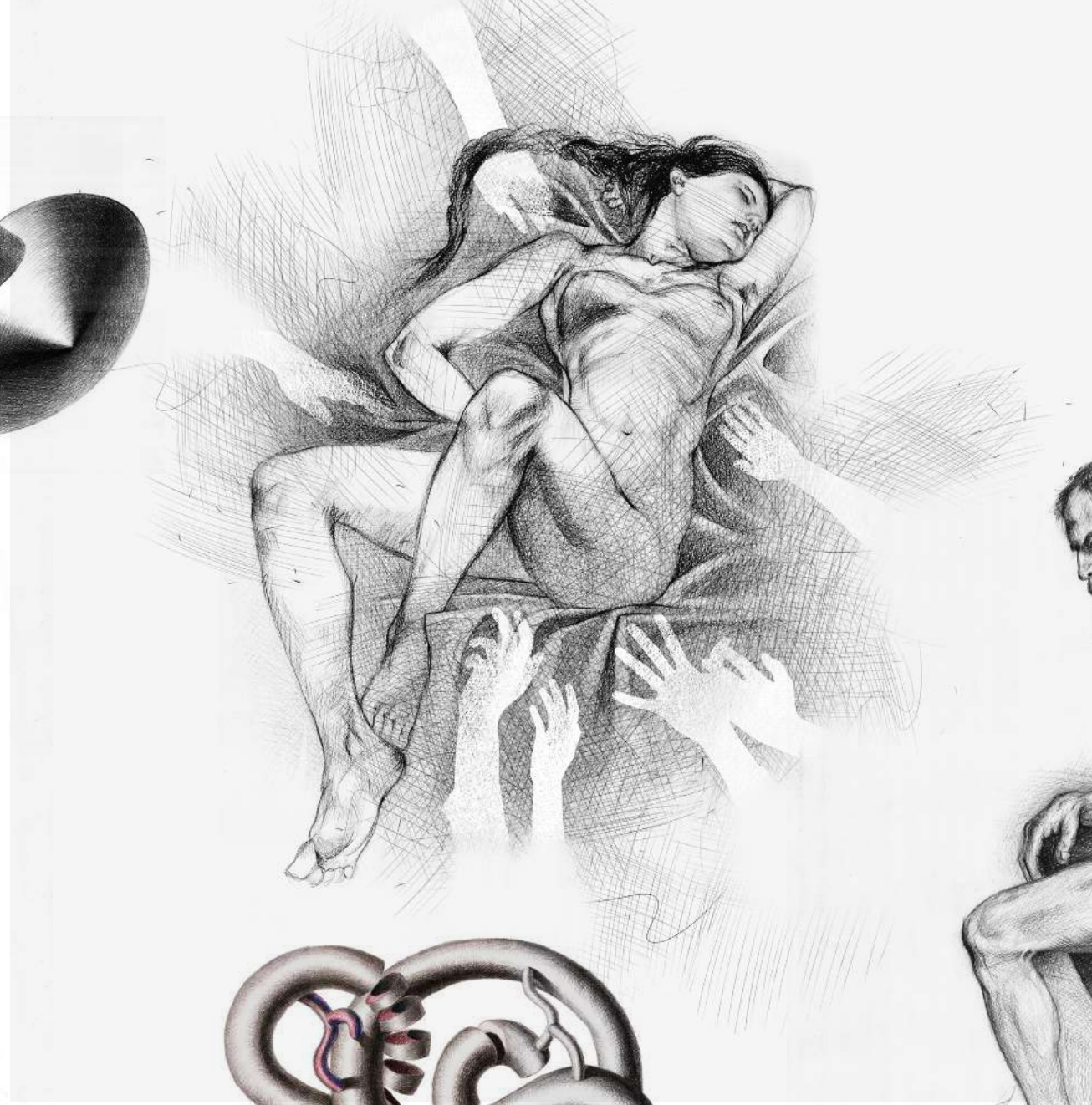
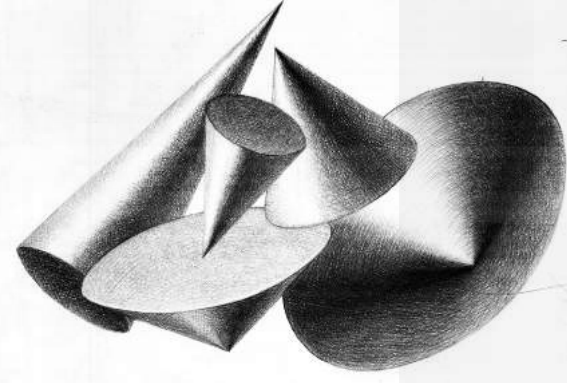
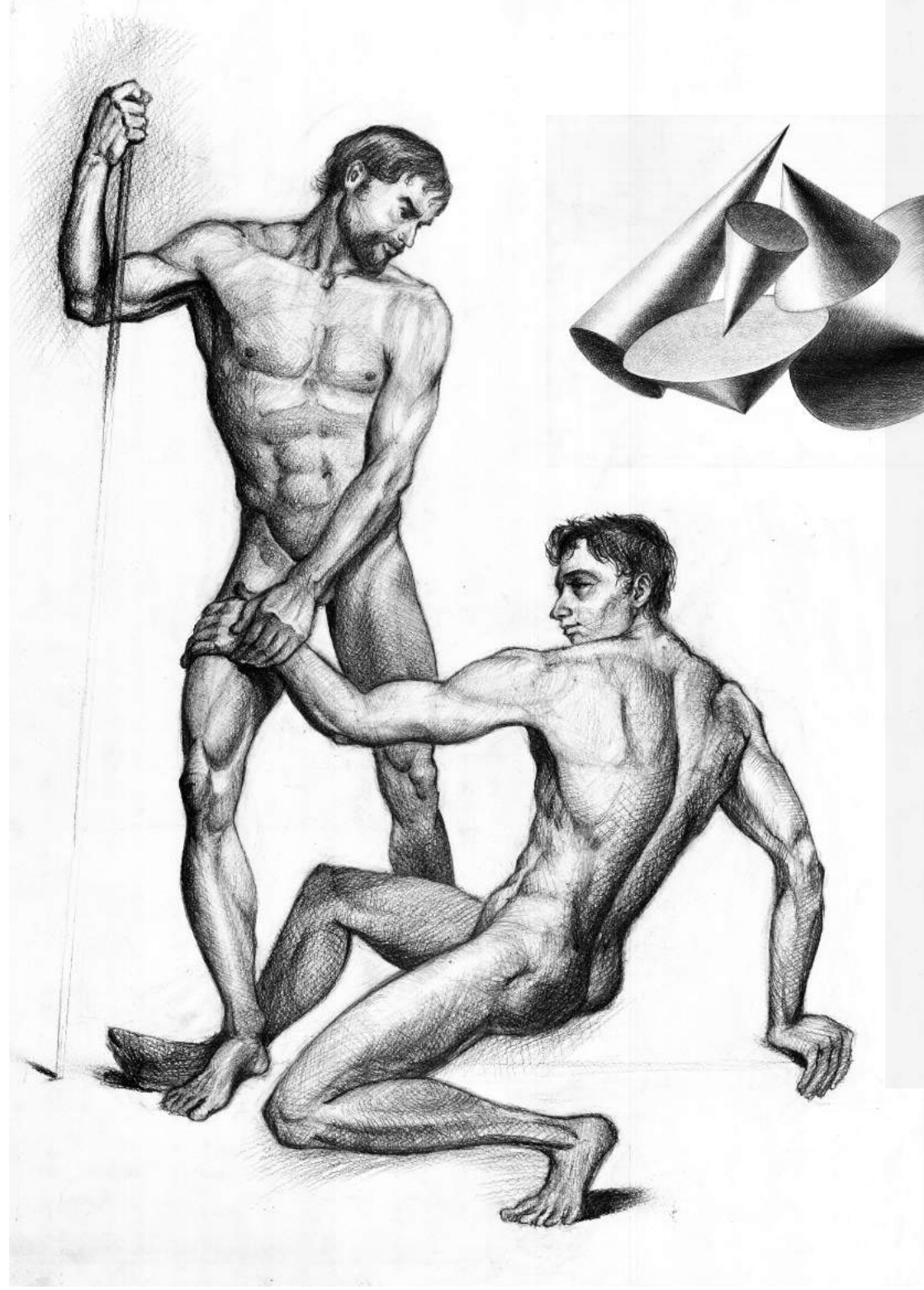


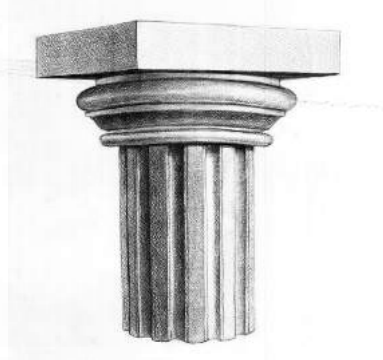
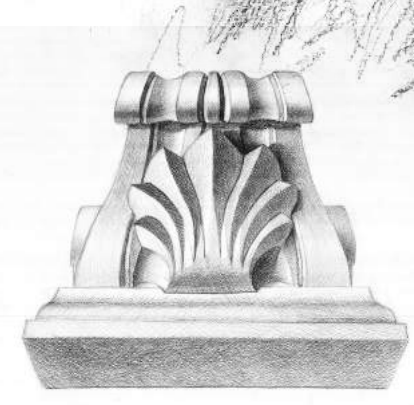
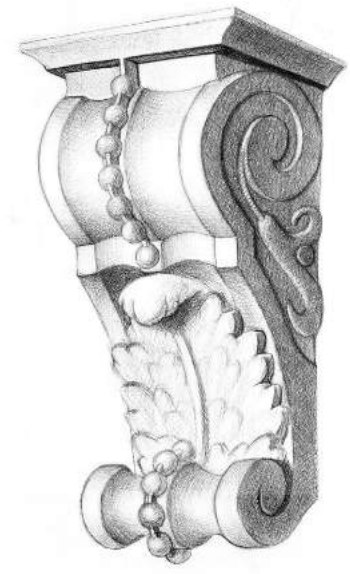
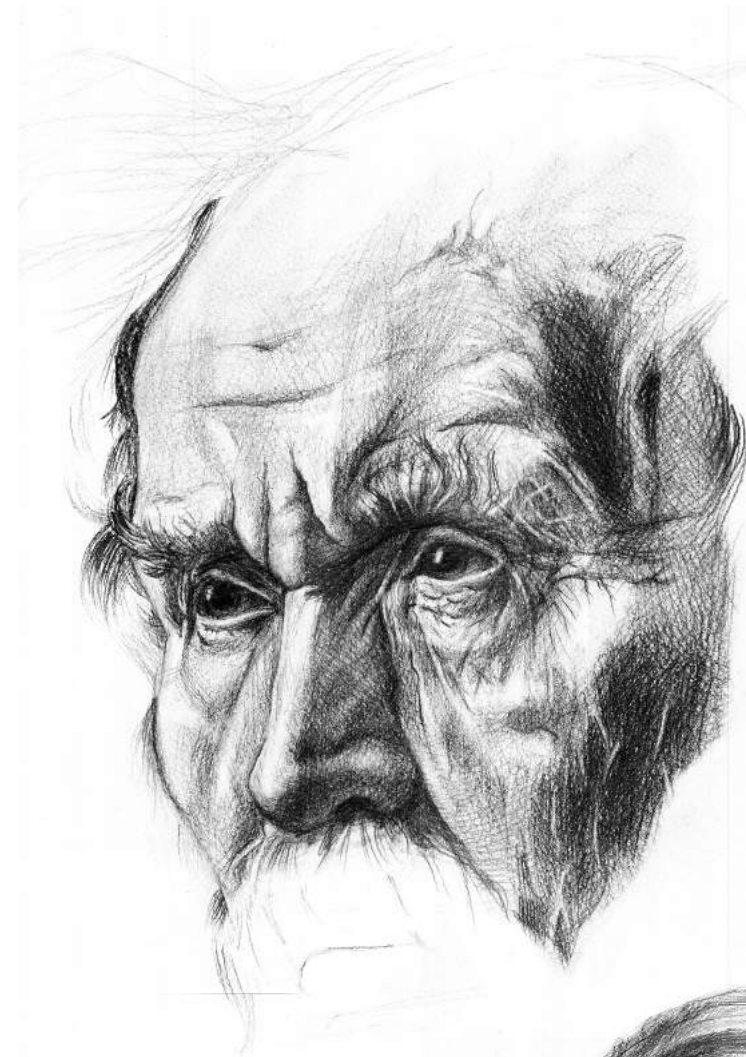
Landscape



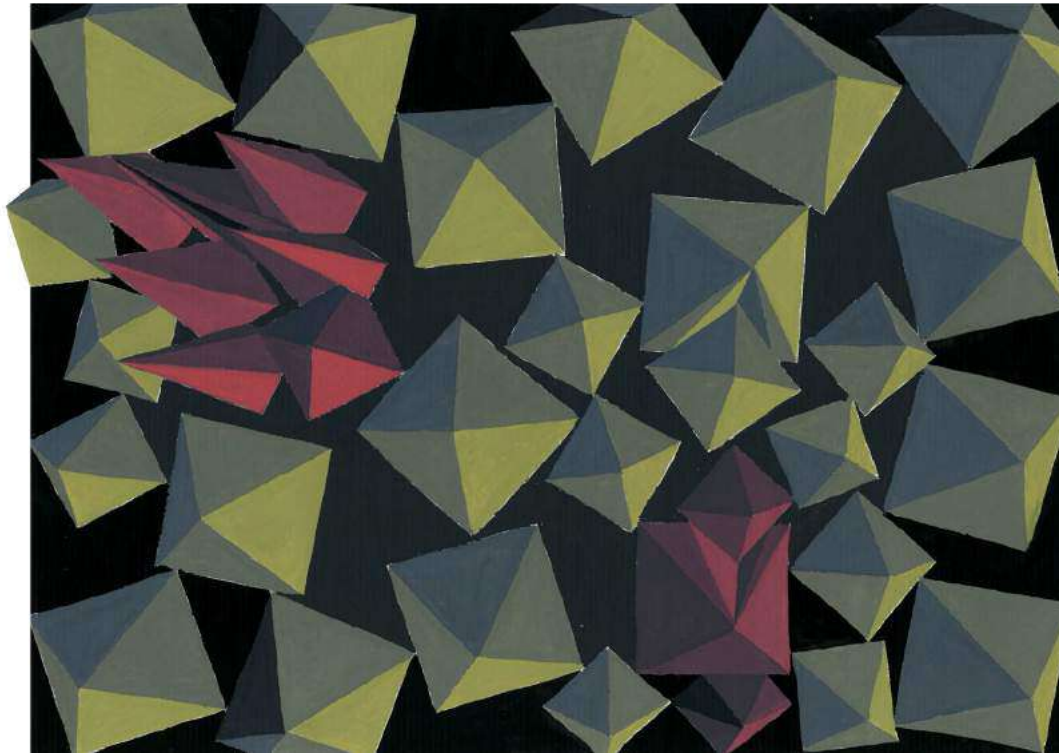
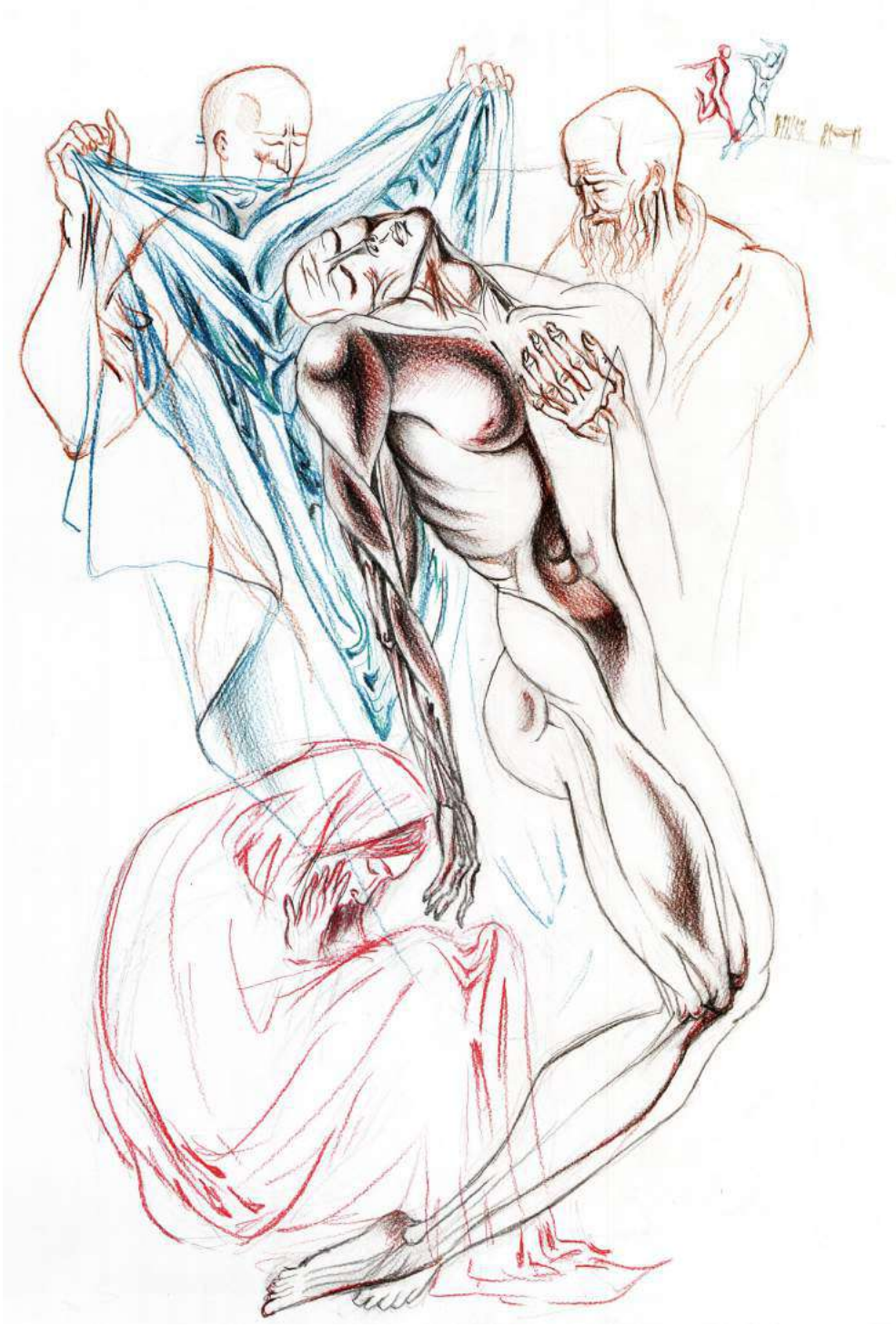
Rome Kindergarten Extension

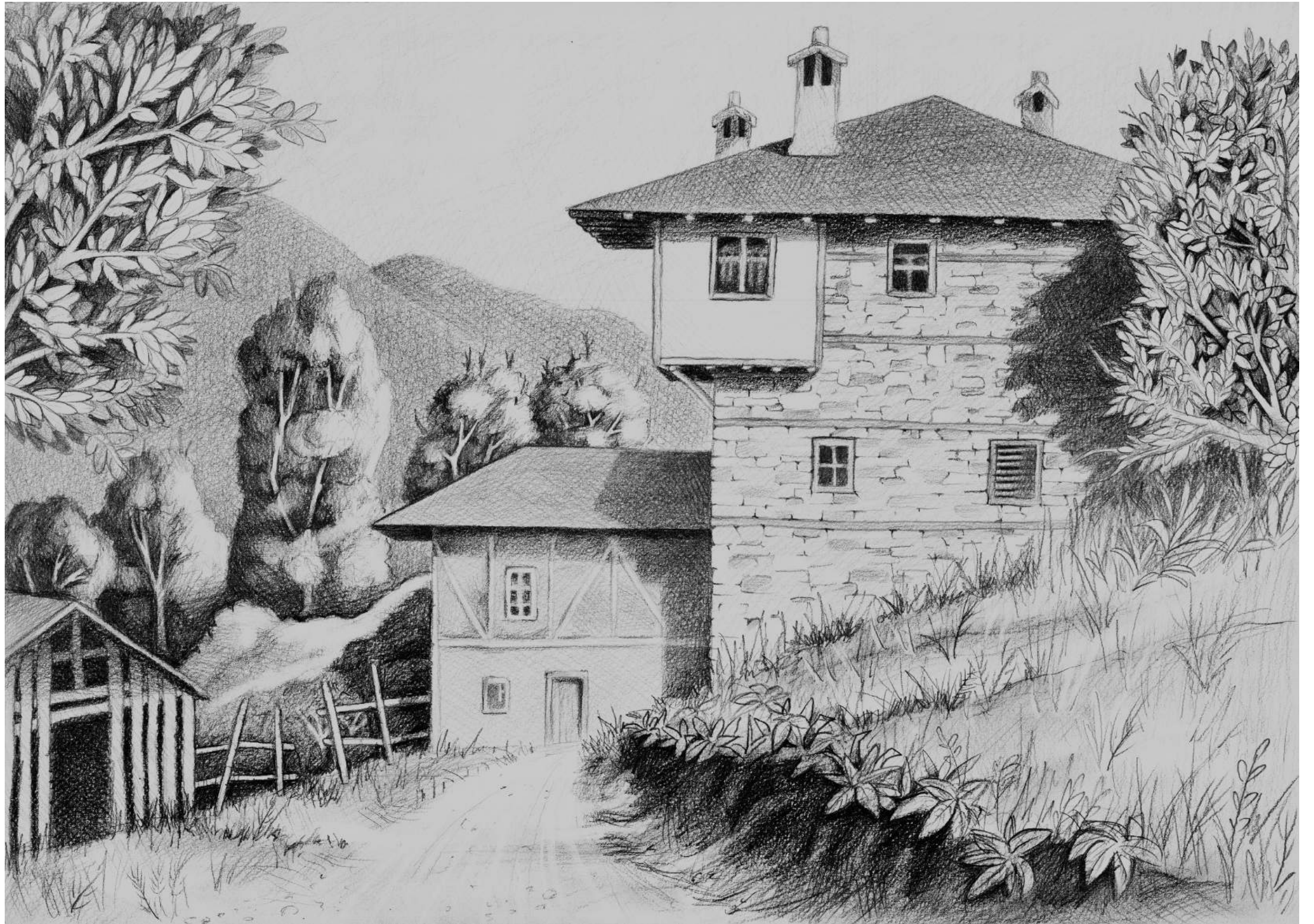






DRAWINGS







PERSONAL

Name Ventsislav VideloV
Birthday 9 September 1995
Nationality Bulgarian
Languages Bulgarian, English, Italian

CONTACT

Mobile +44 7930 169 281
Email vv51@kent.ac.uk
Skype ventvideloV
Address CT2 8EZ

SOCIAL

facebook.com/ventvideloV
instagram.com/ventvideloV
linkedin.com/ventsislav-videloV
behance.net/ventvideloV
pinterest.com/ventvideloV
deviantart.com/ventvideloV
tumblr.com/ventvideloV

PORTFOLIO

ventsislavvideloV.wixsite.com/videloVportfolio



REFERENCES Jef Smith
J.J.Smith@kent.ac.uk

PROFILE

An adaptable and ambitious architecture student looking for a RIBA Part 1 position at a reputable and caring practice.

WORK

Canterbury Punting Company, River Stour

March 2015 – Present

Worked on three different positions. Punter/tour guide, book keeper, street trader.

Mainly a seasonal job in the customer service and entertainment sector. Involved physical and mental effort simultaneously; strict time management and organisation whilst dealing with bookings; being swift and sagacious whilst making offers to potential customers. Attained valuable skills such as working as part of a team, being punctual, and having fun while doing work. Often worked long shifts and week ends.

EDUCATION

University of Kent

September 2014 – June 2017

BA(Hons) Architecture Part 1

Became more aware of the surrounding urban environment. Started to perceive and engage with space in a more profound way. Developed the skills of freehand drawing, technical drawing, digital drawing, model making, construction detailing, effective presenting. Explored various architectural project typologies, whilst gradually increasing scale – temporary shelters, beach huts, art gallery, landscape design, conservation design, urban design. I became involved in social activities and sports - academic peer mentoring and badminton 1st team men's captain.

Università degli Studi di Roma "Tor Vergata"

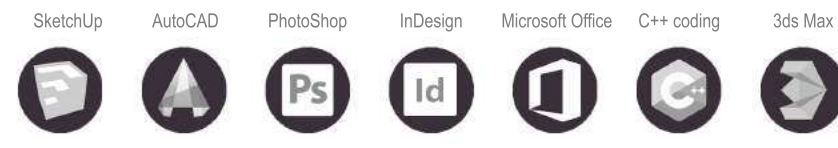
February 2016 – July 2016

ERASMUS Term Abroad

Was immersed in a completely new environment. Became quickly adaptable. Learned how to develop a project in a group. Had a chance to develop architectural schemes alongside with engineering students. Adopted Italian culture and learned the language up to an intermediate working level.

SKILLS AND AWARDS

Software



Driving - European driving licence: Category B

First aid - European First Aid Certificate: Bulgarian Red Cross

Medway Charrette - Team NEXUS: 2nd Place

BUCS Cup and League - University Men's 1st Badminton Team

INTERESTS

